

COLORED BODY PORCELAIN TILE - Rectified Monocaliber

MATT FINISH

OCEAN BLUE



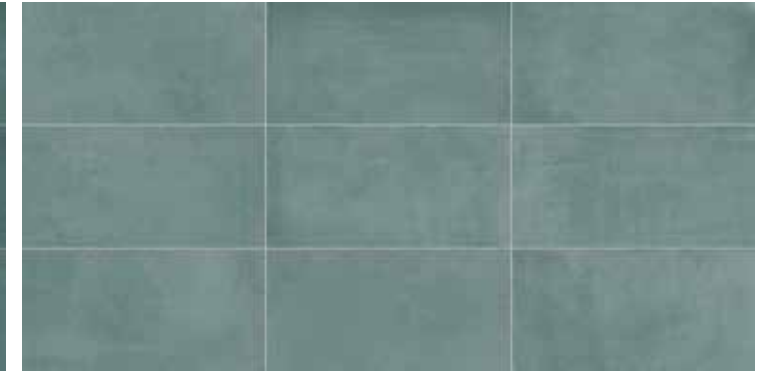
RIVER BLUE



FOREST GREEN



JADE GREEN



Available sizes

Color shading

Available sizes

Color shading



V2



V2

12"x24"
MATT
± 0.35" / 9 mm

3"x12"
MATT
± 0.35"

12"x24"
MATT
± 0.35"

3"x12"
MATT
± 0.35"

Available sizes

Color shading

Available sizes

Color shading



V2



V2

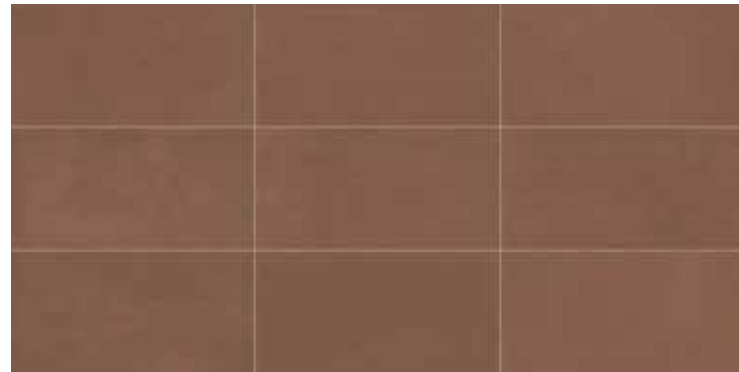
12"x24"
MATT
± 0.35"

3"x12"
MATT
± 0.35"

12"x24"
MATT
± 0.35"

3"x12"
MATT
± 0.35"

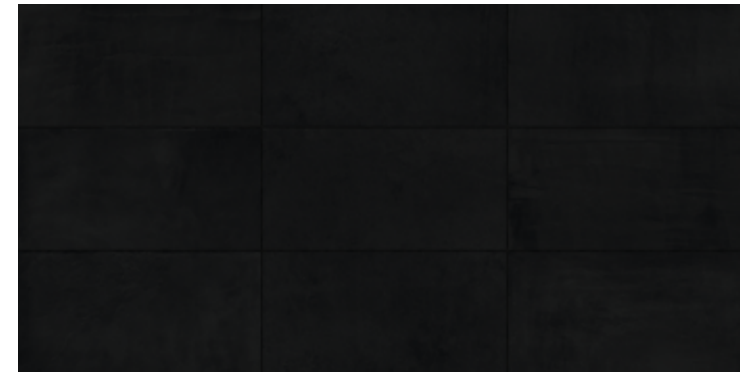
LAVA RED



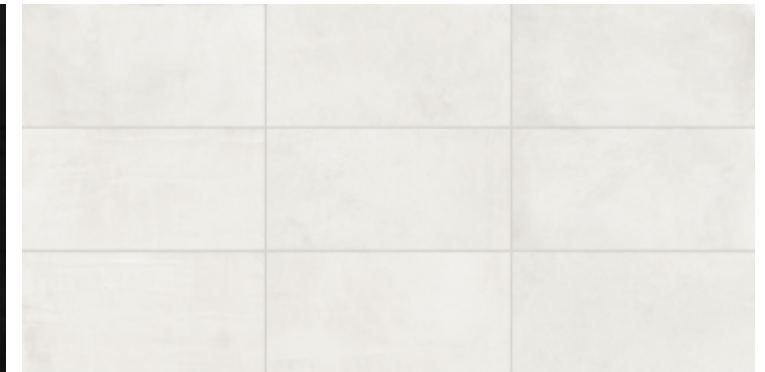
PALE RED



STAR BLACK



STAR WHITE



Available sizes

Color shading

Available sizes

Color shading



V2



V2

12"x24"
MATT
± 0.35"

3"x12"
MATT
± 0.35"

12"x24"
MATT
± 0.35"

3"x12"
MATT
± 0.35"

Available sizes

Color shading

Available sizes

Color shading



V2



V2

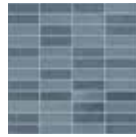
12"x24"
MATT
± 0.35"

3"x12"
MATT
± 0.35"

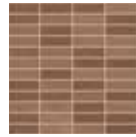
12"x24"
MATT
± 0.35"

3"x12"
MATT
± 0.35"

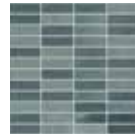
PORCELAIN MOSAICS TILES



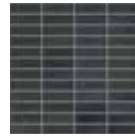
Mix Blue
Mosaic H 2.83"x0.9"
12"x12"



Mix Red
Mosaic H 2.83"x0.9"
12"x12"



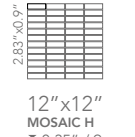
Mix Green
Mosaic H 2.83"x0.9"
12"x12"



Star Black
Mosaic H 2.83"x0.9"
12"x12"



Star White
Mosaic H 2.83"x0.9"
12"x12"



12"x12"
MOSAIC H
± 0.35" / 9 mm

Matches with



Ocean Blue River Blue

Matches with



Lava Red Pale red

Matches with

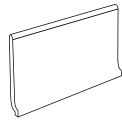


Forest Green Jade Green

TRIM PIECES

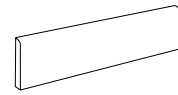
COORDINATED COVE BASE AND BULLNOSE FROM VISION AND VISION COLOR COLLECTIONS

COVE BASE



6"x12"

BULLNOSE



3"x24"

	VISION PEARL	VISION TAUPE	VISION CONCRETE	VISION COLOR STAR WHITE	VISION COLOR STAR BLACK	VISION PEARL	VISION TAUPE	VISION CONCRETE	VISION COLOR STAR WHITE	VISION COLOR STAR BLACK
OCEAN BLUE	●	●	●	●	●			●	●	
RIVER BLUE				●					●	
FOREST GREEN	●			●		●			●	
JADE GREEN	●			●		●			●	
LAVA RED		●		●			●		●	
PALE RED		●		●			●		●	
STAR WHITE				●					●	
STAR BLACK				●	●				●	●



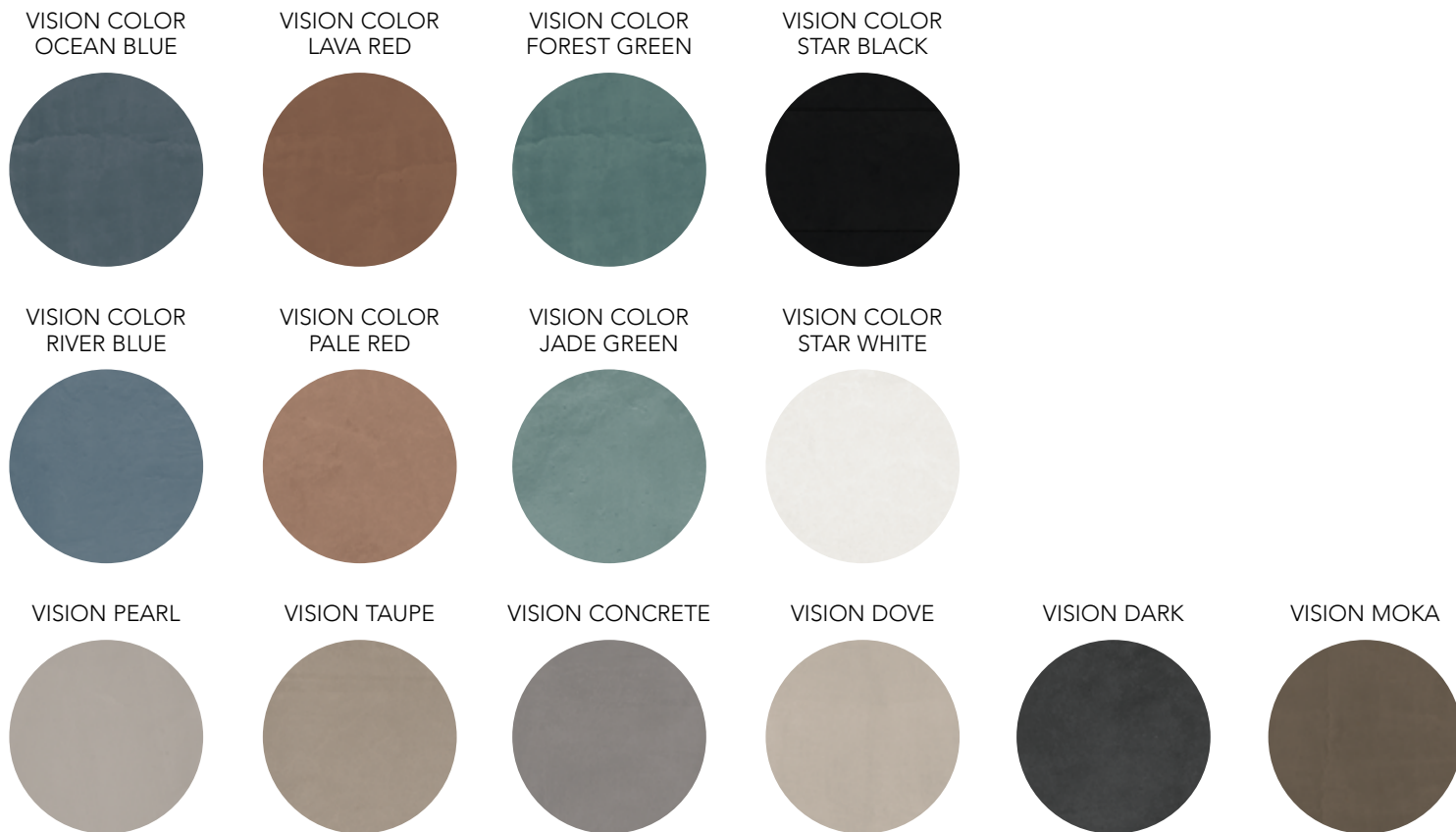
The color of pavers printed in this catalog may differ from actual pavers. Paver reproductions in this catalog are representative only. Slight tone and shade variations are inherent in Porcelain Veneers. Before selecting a color, we recommend that you contact your local representative, who will provide you with a sample piece of the requested paver.

This Porcelain Veneers product is manufactured with a V2 shade variation. Remember that the amount of color as well as the texture of each piece may vary from paver to paver. Inspect the product immediately upon delivery and select pavers from many boxes during installation to minimize and blend any possible color difference.

Color Shading



VISION COLOR WIDENS THE NEUTRAL COLOR PALETTE OF LANDMARK'S VISION RESIN EFFECT WITH NEW CONTEMPORARY COLORS, TO DESIGN ORIGINAL COMBINATIONS.



RECOMMENDED USE

Vision Color matt finish is recommended for indoor floors, walls, countertops, and outdoor walls in commercial and residential applications. The use of Vision Color matt finish is not recommended for outdoor floors (for that application use Frontier20). Landmark recommends an offset no greater than 30%, if a staggered pattern is required for tiles of 20" inches or longer. Landmark recommends the use of leveler for a proper installation.

CARE AND MAINTENANCE

Do not apply any wax or sealer to the product after installation. Regular cleaning is the best way to keep tiles looking good. Use clean, hot water (add household cleaner for more aggressive cleaning). Rinse thoroughly and dry with a soft cloth to prevent water spots. Please visit lcusa.com. For further information regarding the care and maintenance of Landmark products.

WARRANTY

Landmark guarantees that its products will meet or exceed the performance specifications set out in ANSI A137.1- 2012 and in the performance specifications section of the Landmark general catalog. For more information, please visit our website at lcusa.com.

COLORED BODY PORCELAIN TILE - Rectified Monocaliber

PHYSICAL PROPERTIES	TEST ASTM	NORTH AMERICAN STANDARD A137.1*	RESULTS
Water absorption *	C373	≤ 0.5%	COMPLY WITH ANSI A137.1
DCOF Average dynamic coefficient of friction **	BOT 3000 test	≥ 0.42	≥ 0.42
Skid Resistance	DIN 51097	-	-
	DIN 51130		
Resistance to freeze/thaw cycling *	C1026	As reported	RESISTANT
Resistance to thermal shock	C484	As reported	RESISTANT
Warpage (edge)	C485	Warpage ± 0.4% or ± 0.05 in	COMPLY WITH ANSI A137.1
Warpage (diagonal)	C485	Warpage ± 0.4% or ± 0.07 in	COMPLY WITH ANSI A137.1
Wedging	C502	± 0.25% or ± 0.03 in	COMPLY WITH ANSI A137.1
Chemical resistance	C650	As reported	UNAFFECTED
Resistance to stain	C1378	As reported	UNAFFECTED
Thickness	C499	Range: 0.04 in	COMPLY WITH ANSI A137.1
Breaking strength	C648	250 lbf or greater	COMPLY WITH ANSI A137.1

* Average values referred to our production and related to the matt finish of the product.

** As far as values relating to the matt finish of the product and to tests carried out by certified external laboratories whose results are available upon request at Headoffice, we are willing to check the lot you are interested in purchasing.

- Be sure to use tiles belonging to the same caliber.
- Test results are available on request.
- The information provided can be subject to change. Please refer to lcusa.com for the latest, most accurate and up-to-date information.

