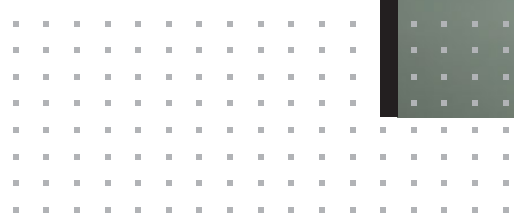


# PIXEL

CERAMIC TILES

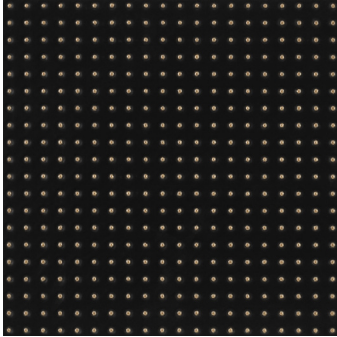




# PIXEL

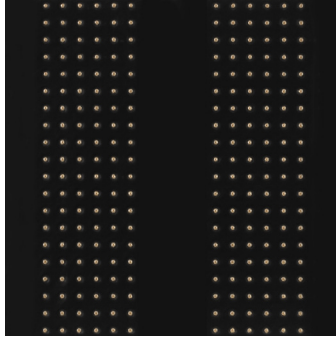
CERAMIC TILES

PIXEL 1 BLACK



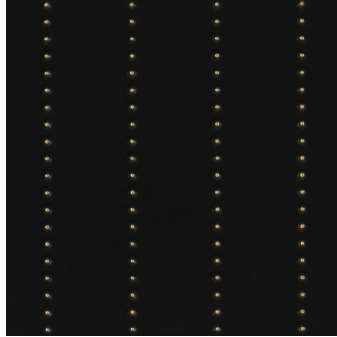
29x29 cm | 12"x12" [rectified]  
AC (SATIN)

PIXEL 2 BLACK



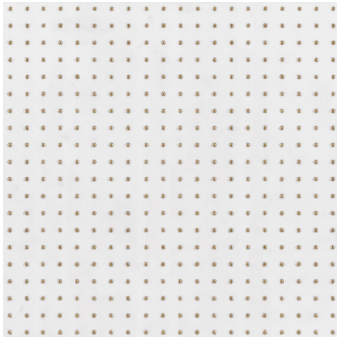
29x29 cm | 12"x12" [rectified]  
AC (SATIN)

PIXEL 3 BLACK



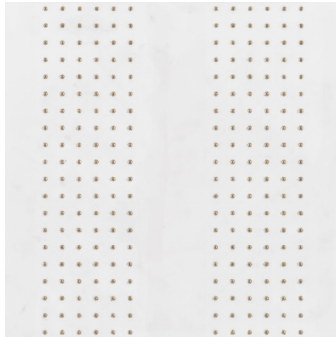
29x29 cm | 12"x12" [rectified]  
AC (SATIN)

PIXEL 1 WHITE



29x29 cm | 12"x12" [rectified]  
AC (SATIN)

PIXEL 2 WHITE



29x29 cm | 12"x12" [rectified]  
AC (SATIN)

PIXEL 3 WHITE



29x29 cm | 12"x12" [rectified]  
AC (SATIN)



WATCH VIDEO BY QR CODE  
WITH THIS SERIES'  
MULTIPLE LAY-OUTS  
POSSIBILITIES.



WALLS



FIRE PROOF




VOC FREE



# PIXEL

## CERAMIC TILES

### PRODUCT INFORMATION

Type / Size	Series	Finish	Rectified	Unit	Work Size (mm)	Thick	Faces	Sq. Ft./ Carton	Pieces/ Carton
 Wall Tiles 12"x12"	PIXEL	Satin	Yes	PC	290x290	9.3 mm	3	8.07	9

### USAGE RECOMMENDATION

	Target DCOF wet	Suitable
Dry & Level - Interior Floor	N/A	
Wet & Level - Interior Floor	≥ 0.42	
Shower Floors (Residential or Light Commercial)	≥ 0.42	
Exterior Floor Applications (including pool decking & other wet areas with minimal footwear)	≥ 0.60	
Ramps & Inclines	≥ 0.65	
Walls/Backsplashes - Interior	N/A	✓
Countertops	N/A	
Facades	N/A	
Pool Linings	N/A	

A DCOF value of ≥0.42 is the standard for tiles specified for level interior spaces expected to be walked upon when wet, as stated in ANSI A137.1-A326.3.

### QUALITY WARRANTY

**QUALITY** Standard quality tiles manufactured by Ellane Ceramic Tiles meet or exceed ISO 13006, NBR 15463 and NBR 13818, ANSI A137.1 standards.

**FIRE PROOF** Ellane ceramic and porcelain tiles are NOT flammable, except mesh material of mesh mounted mosaics.

**VOC FREE** Ellane ceramic and porcelain tiles are low-emitting materials with zero emission of volatile organic compounds (VOC).

### INSTALLATION AND CARE

**Grout Joint Recommendation** 1/16"  
**Shade Variation**  V1 - UNIFORM APPEARANCE

Professional tile installation is recommended. For complete installation instructions consult the TCNA Handbook for Ceramic, Glass, and Stone Tile Installation.

Follow the grout manufacturer instructions for the complete removal of grout and construction residue from initial installation.

#### SPECIAL CLEANING INSTRUCTIONS:

These tiles have a special decorative finish with precious metals or distinctive glazing, therefore should be cleaned only with a cloth soaked in water and neutral detergent. Do not use acidic cleaning products or abrasive sponges that may damage the tiles' surface.

#### SPECIALTY PRODUCT DISCLAIMER:

This series is a finely decorative Specialty Product with metallic or distinctive glazing finishes. THESE TILES ARE SUBJECT TO SURFACE DAMAGE WHEN EXPOSED TO PHYSICAL OR CHEMICAL FORCES.

### PERFORMANCE CHARACTERISTICS

	ASTM#	Result
Water Absorption	C373	≤ 20%
Breaking Strength	C648	≥ 125 lbs
DCOF WET	ANSI A137.1 ANSI A326.3	N/A
Scratch Hardness	MOHS	4
Frost Resistance	C1026	No
Chemical Resistance	C650	Class E
Stain Resistance	C1378	Class A



**PIXEL**  
CERAMIC TILES



Photo credits: Architect Luisa Azevedo @luisaazevedo.arquitetura,  
Photographer Luana Castro @luana.rcastro

Photo credits: Architect Luisa Azevedo @luisaazevedo.arquitetura,  
Photographer Luana Castro @luana.rcastro



**PIXEL**  
CERAMIC TILES

